

Re: mini1300 "Modified Mini 1300 board"



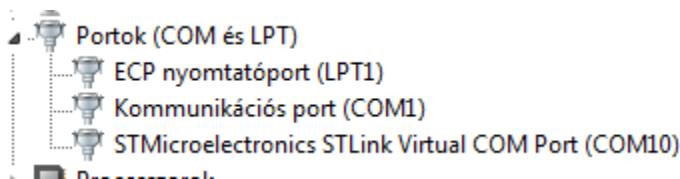
[Gyula Molnar](#)

2:10pm [#1045](#)
[Edited](#) 5:57pm

Well, then let's run to him again what to do.
So before starting ST-Link, you plug in the USB mini to PC USB connector.
You will then start the ST-Link program.

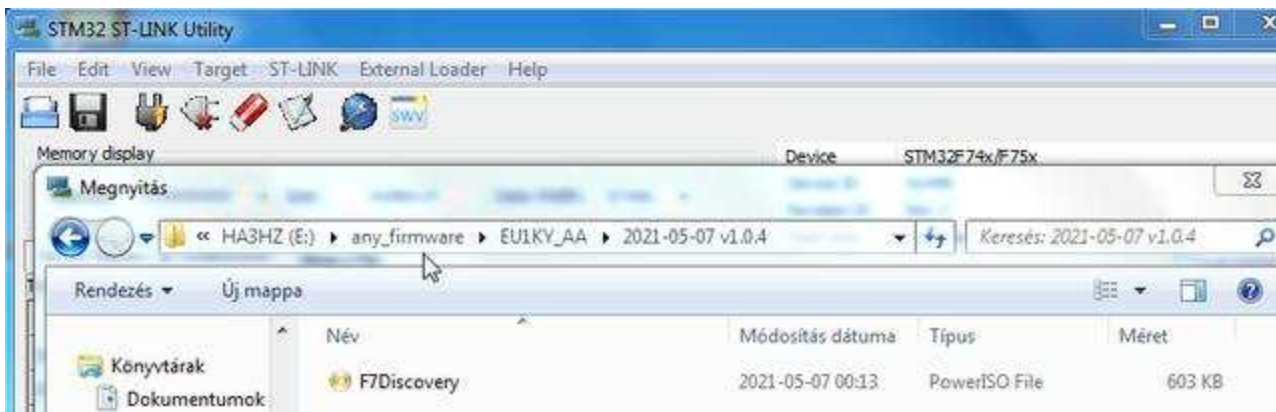
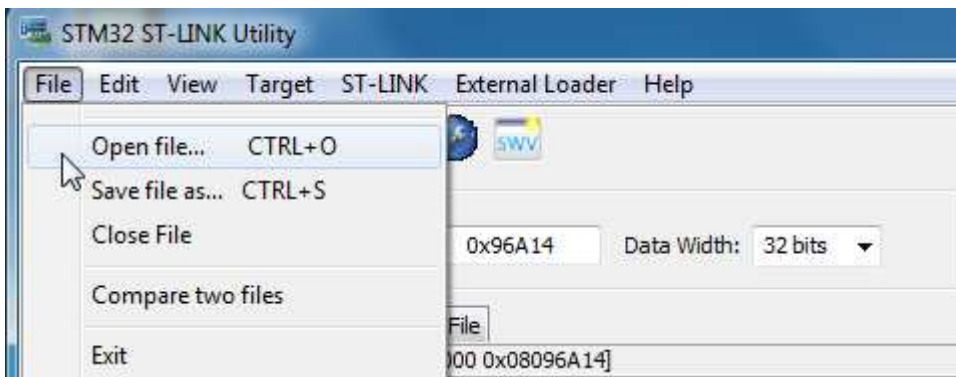
You want to update the firmware of your antenna analyzer, right.

The ST-Link program is running, while you can check in the Device Manager if there is a 'ST-Link Virtual COM Port (COM ..)

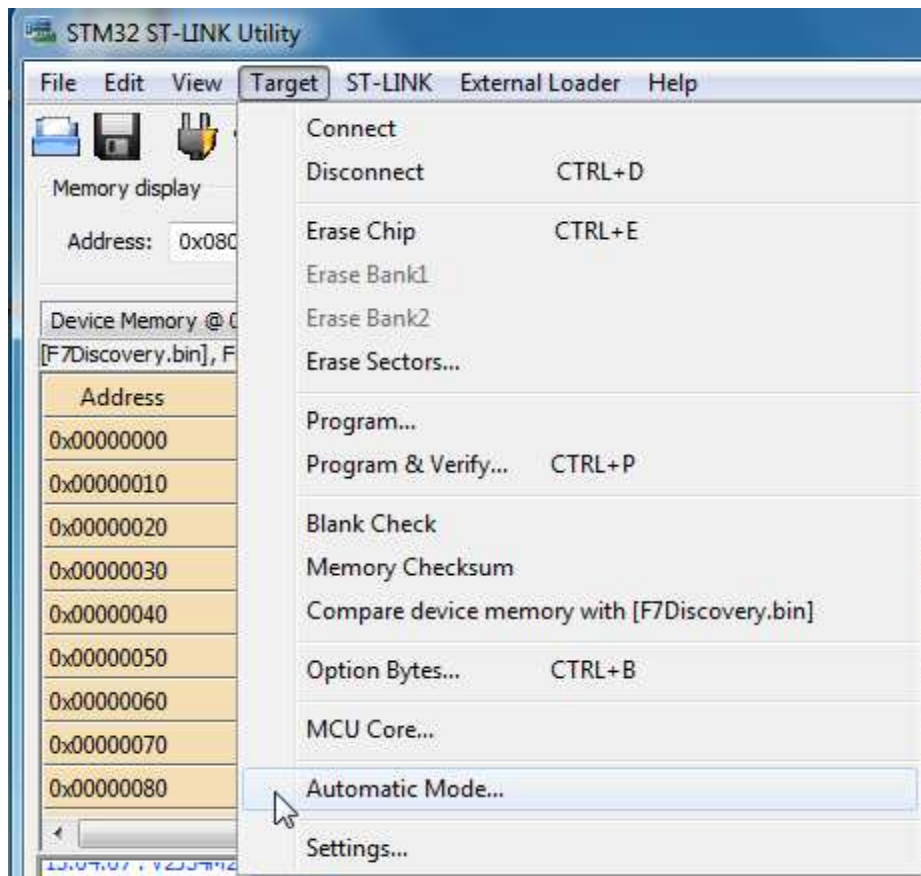
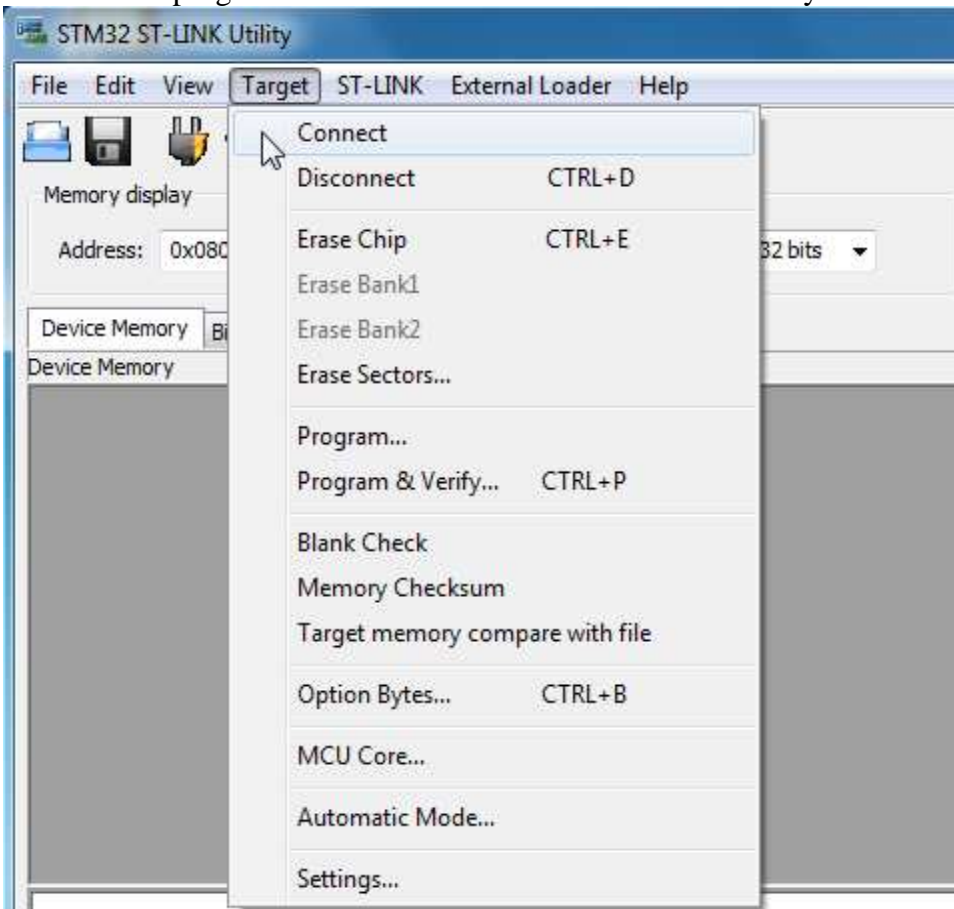


If so, your computer has recognized the driver and can communicate with the analyzer.
You will then need to install the latest firmware (v1.04) that can communicate (after setup) via AA-600 emulation.

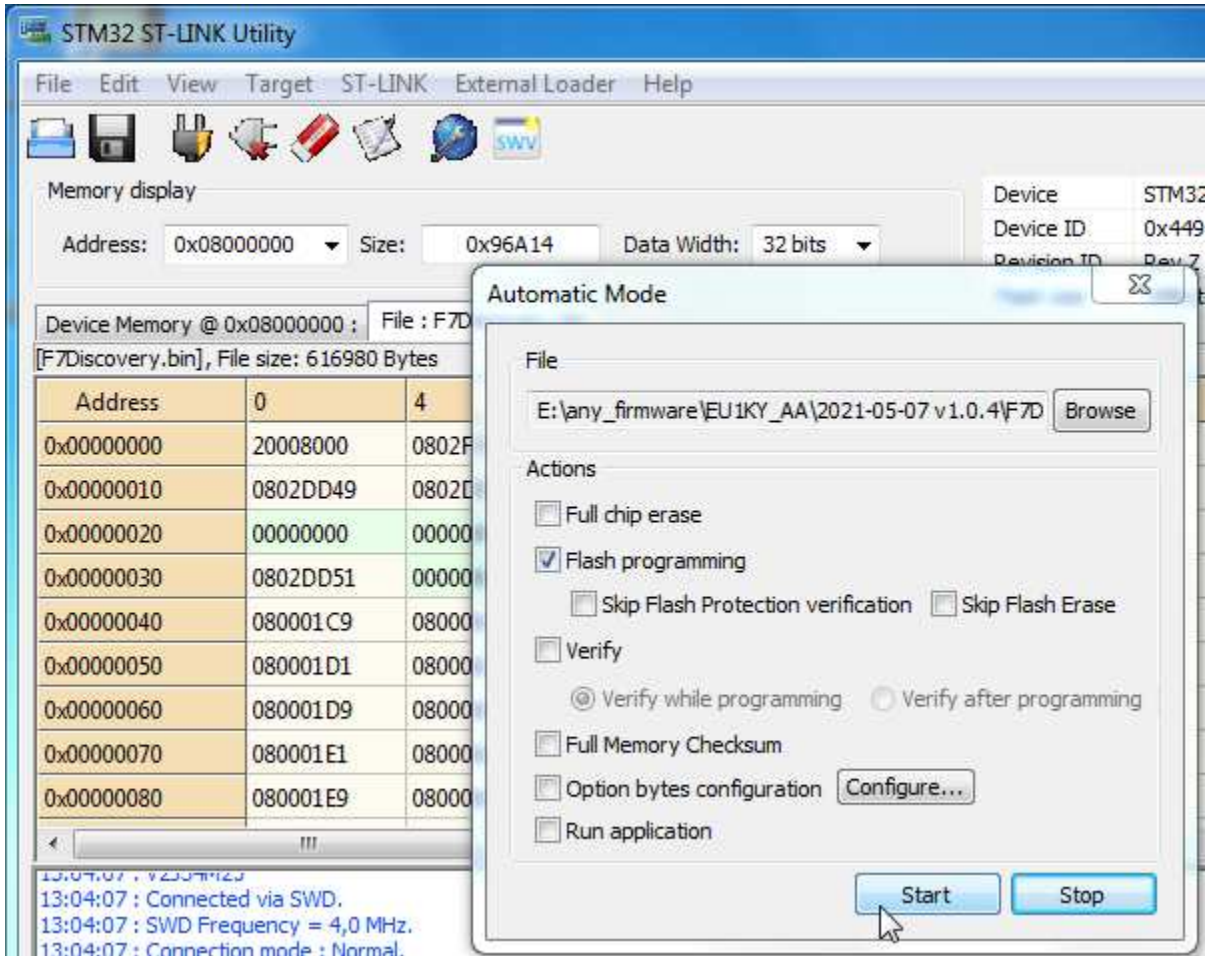
To do this, in the ST-Link menu, 'File', 'Open File' will look for the firmware on your machine that you have previously downloaded (v1.04) and click on it to load it into ST-Link.



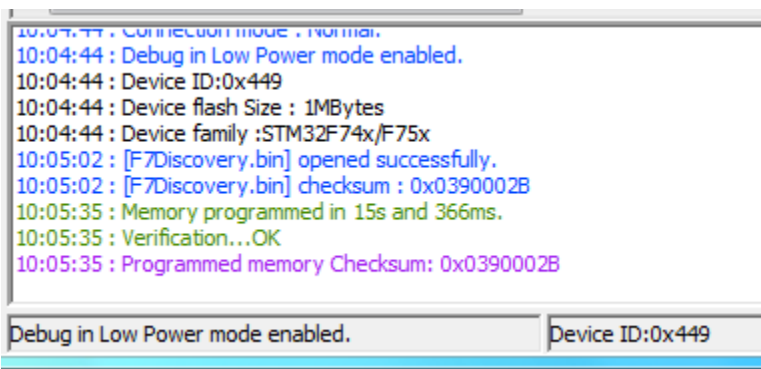
The ST-Link program then establishes a connection to the analyzer with 'Target' and 'Connect'.



Then go to 'Target' and 'Automatic Mode' here you start the new firmware upload with the 'Start' button. More possibly more complicated, I recommend automatic first.



When done, you will get a message in the ST-Link Utility program window: 'Memory programmed in 15s and 366ms' shows computer-dependent transmission time.



You will then use 'Target' and 'Disconnect' to disconnect the communication between ST-Link and the analyzer.

You turn off and restart the analyzer.

USB cable remains required for AntScope2 connection, but first some setup. You must configure the analyzer to communicate with AntScope2 PC.

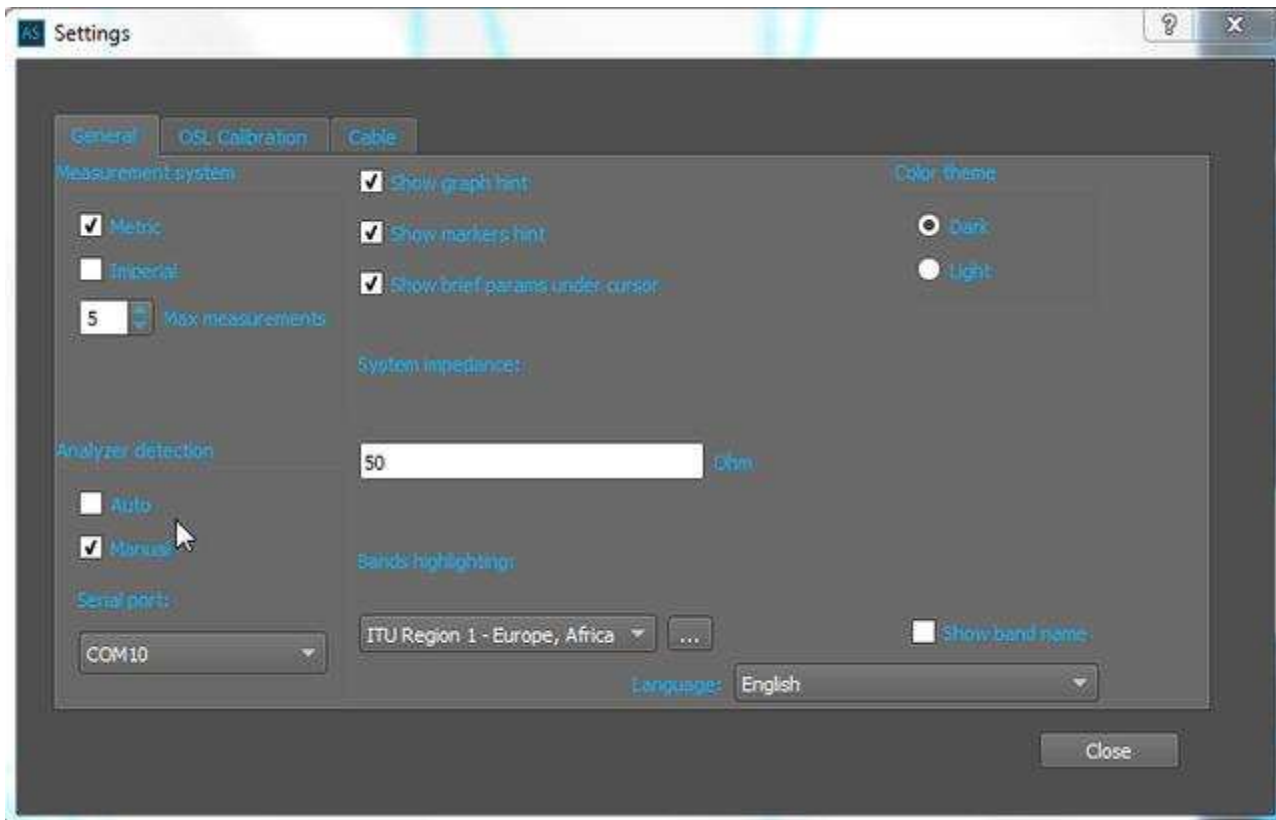
To do this, first enter the 'Configuration' (bottom left corner) then 'Communication' button.

In the 'configuration Editor' use the '<Prev param' to scroll to the 'SHOW_HIDDEN' parameter, you set it to YES.

You will then see the parameters still to be set.

In 'Next param>' at SERIAL_EMULATION you set 'AA-600', which you close with 'Save and exit'.

You start AntScope2 and first you need to open the 'Settings' window (bottom left corner). Here you set whether you want to connect manually or automatically, check if the COM port recognition is correct.



You set the required additional parameters and then restart 'AntScope2'. You are probably detecting 'AA-600'.



If not, check that the PC and analyzer COM port speeds are set the same. see Analyzer-> Configuration-> Configuration '-> step to' COM_SPEED '

Note that with the 'Configuration Editor' you can change many parameters, just do it carefully !!!

73, Gyula HA3HZ

--

